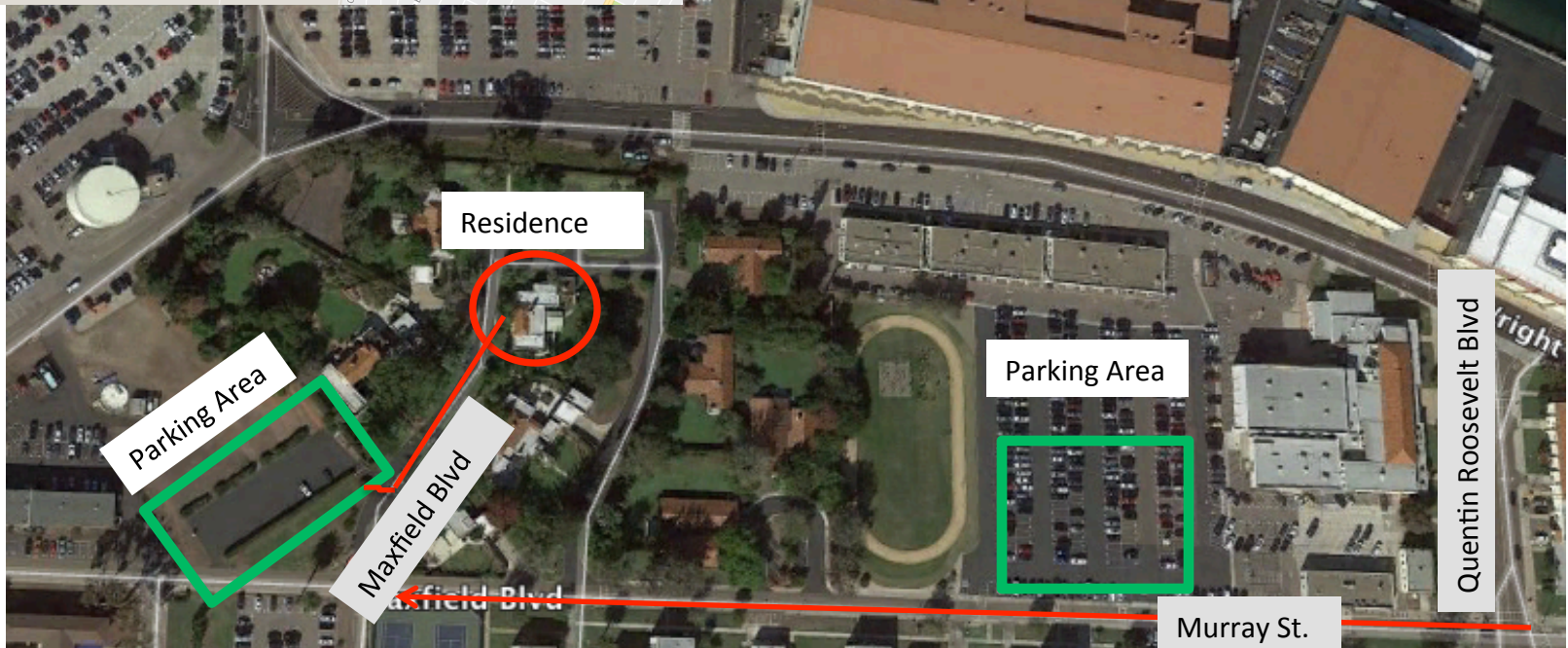
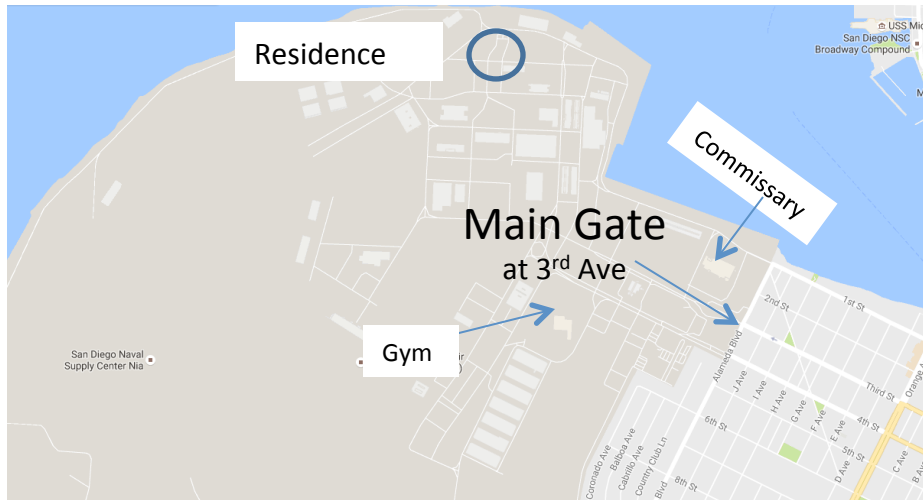


RDML & Mrs. Koehler Residence



Directions to Qtrs C:

Carpooling recommended as the neighborhood has several functions going on. Parking will be limited. You may want to meet in the commissary or gym parking lots and carpool from there.

Cross the bridge / Route 75 to Coronado, which puts you on 3rd Street.

Follow 3rd Street to the end at N. Island Naval Air Station main gate. Military ID required.

Continue past gate about 4/10 of a mile on Stockdale to the THIRD traffic light (where you'll see the static helicopters displayed). Turn right at the light onto Quentin Roosevelt Blvd.

Stay in the right lane. Travel approx. ½ mile and through the Third traffic light (first two are off to the side and can be a bit hard to see). After the third there is a building with tall tower/light signal on top of it just ahead on the left -- you'll turn just after that building onto Murray Street.

Travel 1/10 mile toward Maxfield Blvd (there is a stop sign at Maxfield & Murray),

Two parking options:

The largest lot is on the right hand side of Murray Street, just after you have made the left from Quentin Roosevelt Blvd.

The guest lot is at the intersection of Maxfield Blvd & Murray St., diagonally across from the tennis courts. The lot is accessible from Maxfield – the driveway is on your left just before the first house on the left.

Walk down Maxfield Blvd to the 3rd house on the right, "Qtrs C". Look for a garden flag near the street that says "Twinkle & Shine".